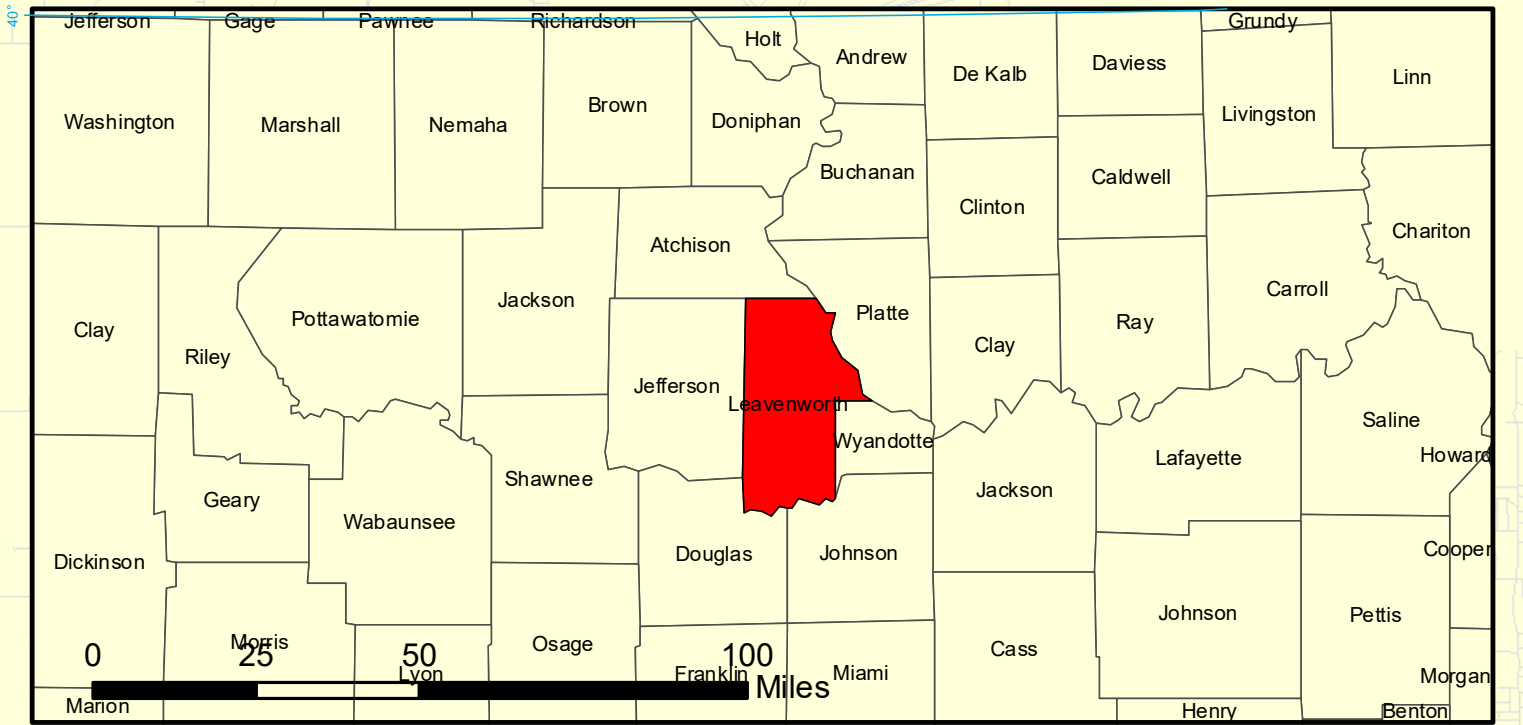
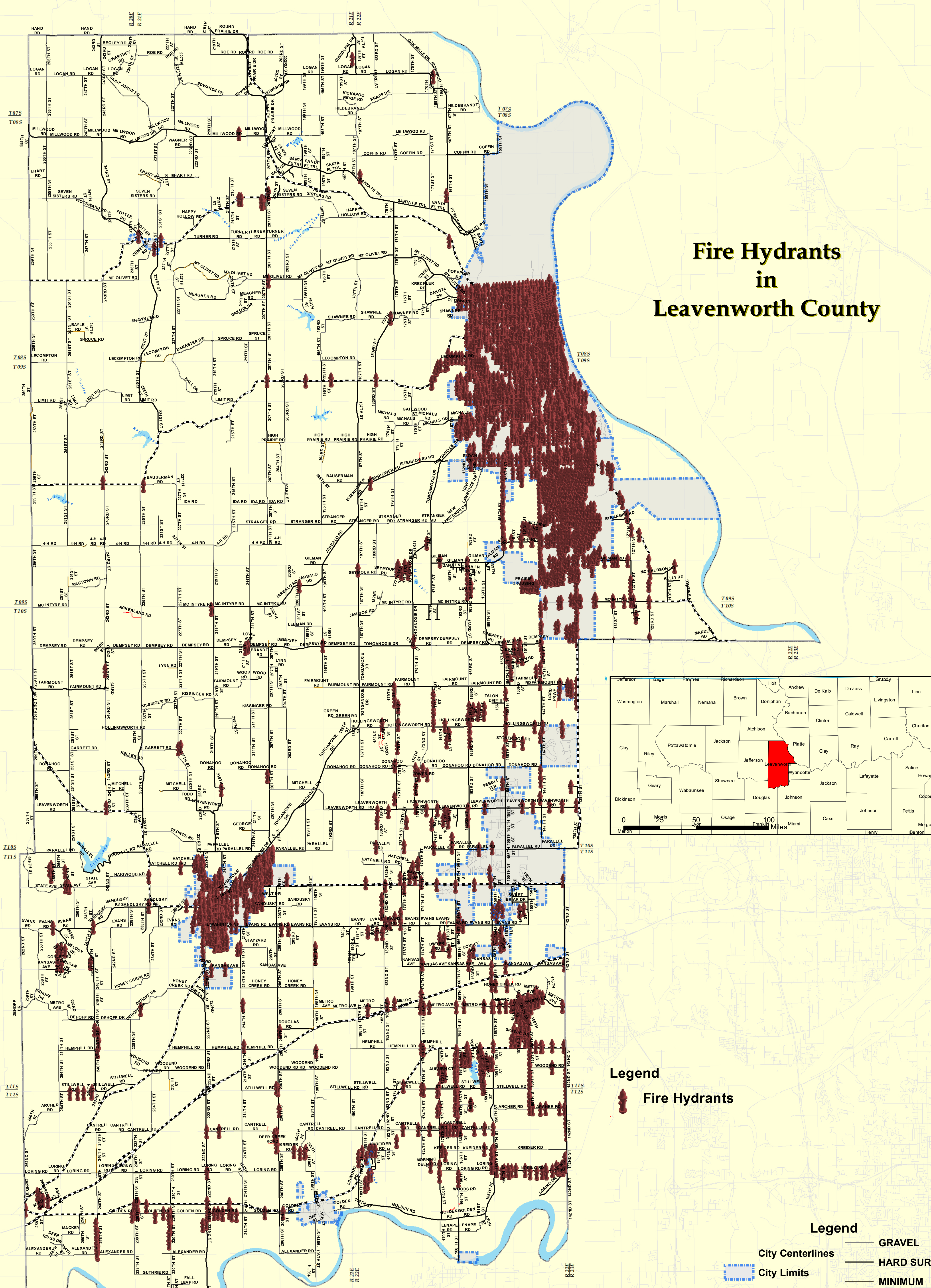




# LEAVENWORTH COUNTY KANSAS 2025



## Fire Hydrants in Leavenworth County



**Legend**  
Fire Hydrants

**Legend**

- GRAVEL
- HARD SURFACE
- MINIMUM
- PRIVATE
- State Maintained
- City Centerlines
- City Limits
- Sections
- County Boundary

Projection: NAD 1983 State Plane Kansas 1501 (US Feet)  
Disclaimer: Map is projected in real-world coordinates.  
However, it is not intended for legal purposes.  
Measurement accuracy is not guaranteed.

